

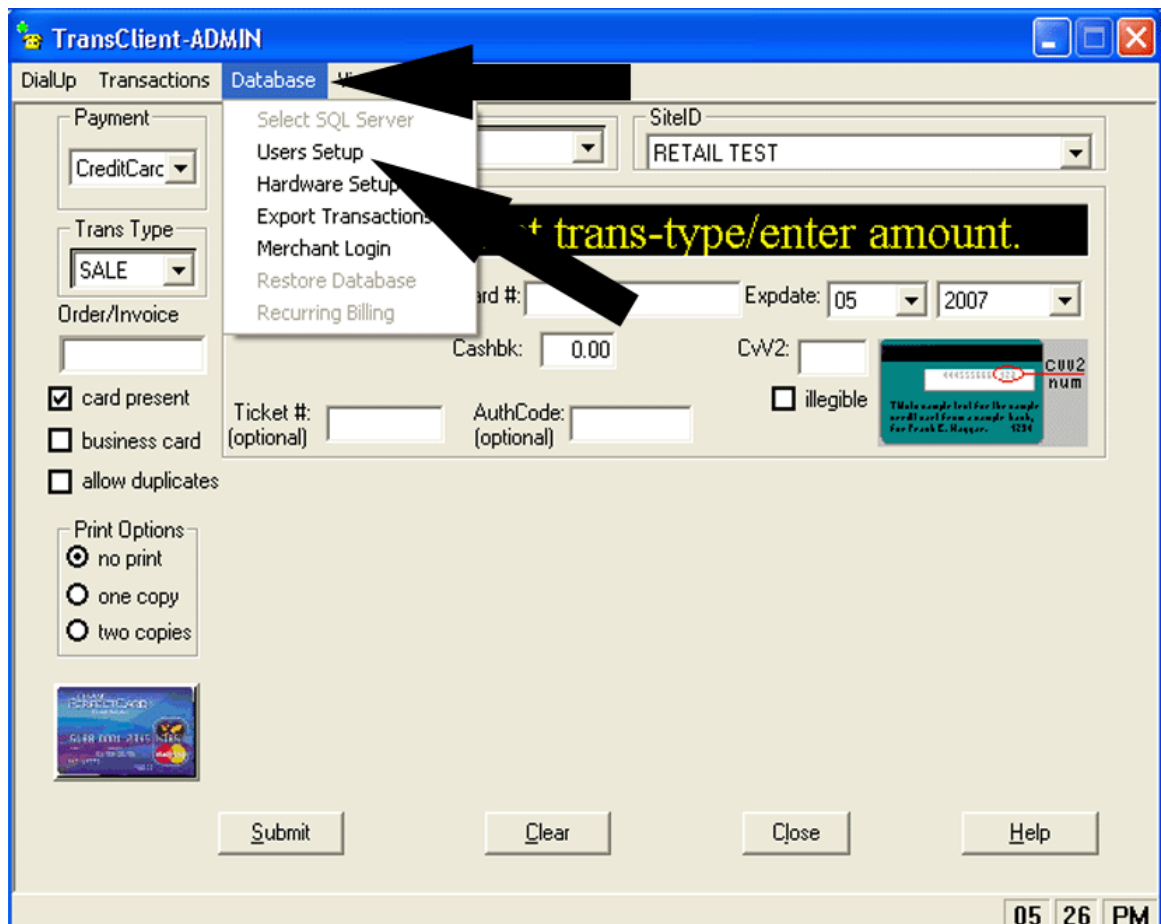
How to install the Verifone 1000 SE Pinpad

1. Turn your PC off completely (if you connect the Pinpad to the PC while it is on you will delete the encryption from the manufacturer. Only the manufacturer can encrypt the device)
2. Connect the Pinpad to the PC using the standard RS232 (serial) connection.
3. Connect the power supply to the RS232 (serial) cable. There is a small jack located at the connector of the cable to insert the power supply.
4. Power on your PC.
5. Check the Baud rate of the Pinpad (see instructions/chart below)

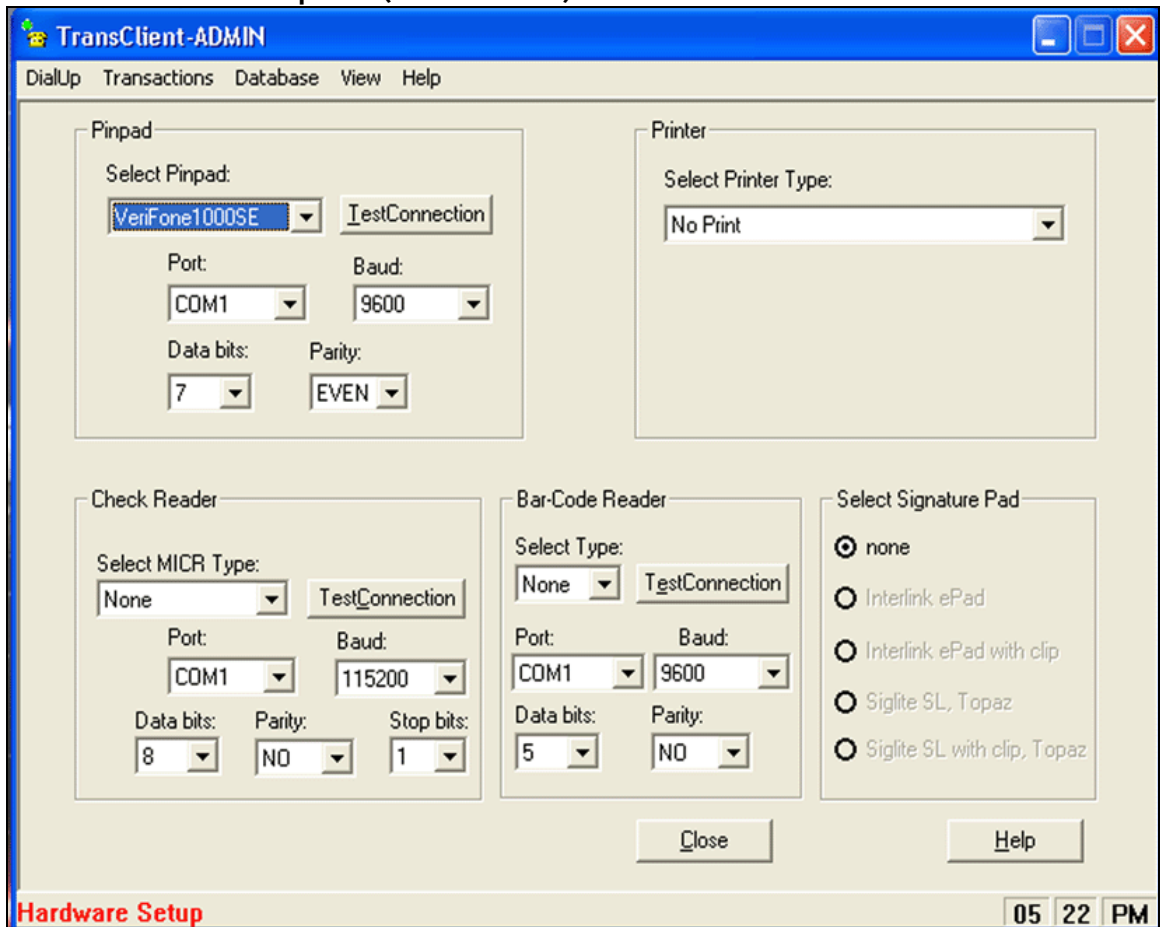
DSP BAUD RATE Select option 8 to display the PINpad current baud rate.

Display	Response
(idle prompt)	Press [CLEAR] immediately followed [3].
PASSWORD	Press 83746 followed by [ENTER].
Menu cycle...	Press [8].
8=DSP BAUD RATE...	
xxxx BPS	Displays the current baud rate in one of 1200 / 2400 / 4800 / 9600 / 19200 BPS for 3 seconds then return to idle prompt.

6. Open the SlimCD software (Transclient) click on Database and then Hardware setup as seen below



7. Locate the section for Pinpad (see below)



8. Enter in the information that corresponds to your Pinpad

